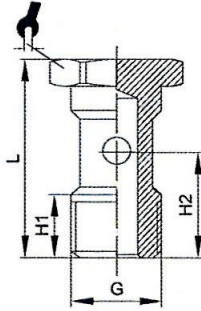


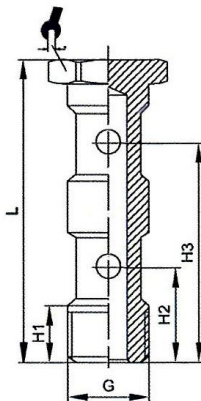
Betriebstemperatur: -20 °C bis +70 °C
 Arbeitsdruck: -0,98 bar bis 16 bar - abhängig vom Druckbereich des eingesetzten Schlauches
 Medium: Druckluft
 Gewinde: G-Gewinde nach DIN EN ISO 228-1
 Empfohlener Schlauch: PA und PU
 Anwendungsbereich: Druckluftanlagen, Vakuum



762.018

Hohlschraube, einfach

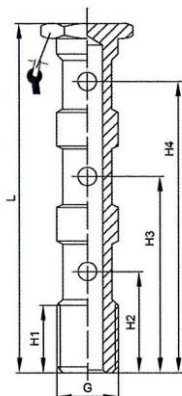
| Typen Nr. | Artikel Nr. | G mm | H1 mm | H2 mm | L mm | SW mm |
|-----------|-------------|-------|-------|-------|------|-------|
| 762.005 | 108822 | M5 | 6,0 | 9,6 | 17,5 | 8 |
| 762.018 | 108823 | G 1/8 | 9,0 | 15,0 | 28,0 | 14 |
| 762.014 | 108824 | G 1/4 | 12,0 | 18,0 | 33,0 | 17 |
| 762.038 | 108825 | G 3/8 | 13,0 | 21,0 | 36,0 | 19 |



763.018

Hohlschraube, zweifach

| Typen Nr. | Artikel Nr. | G mm | H1 mm | H2 mm | H3 mm | L mm | SW mm |
|-----------|-------------|-------|-------|-------|-------|------|-------|
| 763.018 | 108826 | G 1/8 | 9,0 | 15,0 | 31,0 | 44,5 | 14 |
| 763.014 | 108827 | G 1/4 | 11,0 | 17,0 | 36,0 | 51,5 | 17 |
| 763.038 | 108828 | G 3/8 | 14,0 | 20,5 | 43,0 | 58,1 | 19 |



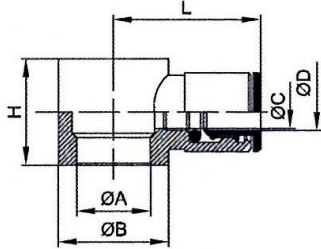
764.018

Hohlschraube, dreifach

| Typen Nr. | Artikel Nr. | G mm | H1 mm | H2 mm | H3 mm | H4 mm | L mm | SW mm |
|-----------|-------------|---------|----------|----------|----------|----------|---------|----------|
| 764.018 | 108829 | G 1/8 | 9,0 | 16,0 | 32,5 | 48,0 | 60,0 | 14 |
| 764.014 | 108830 | G 1/4 | 12,0 | 18,5 | 37,0 | 55,5 | 70,5 | 17 |
| 764.038 | 108831 | G 3/8 | 13,0 | 20,5 | 44,0 | 65,0 | 80,0 | 19 |

Dichtmaterial:

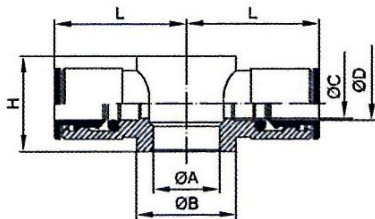
NBR



765.018-4

Ringstück, einfach

| Typen Nr. | Artikel Nr. | ØD mm | G mm | ØA mm | ØB mm | ØC mm | H mm | L mm | Lösering |
|------------|-------------|-------|-------|-------|-------|-------|------|------|----------------------------|
| 765.005-4 | 108832 | 4 | M5 | 5,0 | SW9 | 3,0 | 9,0 | 18,0 | POM schwarz |
| 765.018-4 | 108833 | 4 | G 1/8 | 9,9 | 14,0 | 3,0 | 15,0 | 20,5 | POM schwarz |
| 765.018-6 | 108834 | 6 | G 1/8 | 9,9 | 14,0 | 5,0 | 15,0 | 23,0 | POM schwarz |
| 765.018-8 | 108835 | 8 | G 1/8 | 9,9 | 14,0 | 6,0 | 15,0 | 24,5 | POM schwarz |
| 765.014-6 | 108836 | 6 | G 1/4 | 13,3 | 18,0 | 5,0 | 17,0 | 24,0 | POM schwarz |
| 765.014-8 | 108837 | 8 | G 1/4 | 13,3 | 18,0 | 7,0 | 17,0 | 26,0 | POM schwarz |
| 765.014-10 | 108838 | 10 | G 1/4 | 13,3 | 18,0 | 9,0 | 17,0 | 27,0 | Messing vernickelt schwarz |
| 765.014-12 | 108839 | 12 | G 1/4 | 13,3 | 18,0 | 9,0 | 17,0 | 28,0 | Messing vernickelt schwarz |
| 765.038-8 | 108840 | 8 | G 3/8 | 16,6 | 21,0 | 7,0 | 20,0 | 27,0 | POM schwarz |
| 765.038-10 | 108841 | 10 | G 3/8 | 16,6 | 21,0 | 9,0 | 20,0 | 28,0 | Messing vernickelt schwarz |
| 765.038-12 | 108842 | 12 | G 3/8 | 16,6 | 21,0 | 11,0 | 20,0 | 29,0 | Messing vernickelt schwarz |



766.018-4

Ringstück, zweifach

| Typen Nr. | Artikel Nr. | ØD mm | G mm | ØA mm | ØB mm | ØC mm | H mm | L mm | Lösering |
|------------|-------------|-------|-------|-------|-------|-------|------|------|----------------------------|
| 766.005-4 | 108843 | 4 | M5 | 5,0 | 7,0 | 3,0 | 9,0 | 18,0 | POM schwarz |
| 766.018-4 | 108844 | 4 | G 1/8 | 9,9 | 14,0 | 3,0 | 15,0 | 21,0 | POM schwarz |
| 766.018-6 | 108845 | 6 | G 1/8 | 9,9 | 14,0 | 5,0 | 15,0 | 23,0 | POM schwarz |
| 766.018-8 | 108846 | 8 | G 1/8 | 9,9 | 14,0 | 6,0 | 15,0 | 24,5 | POM schwarz |
| 766.014-6 | 108847 | 6 | G 1/4 | 13,3 | 18,0 | 5,0 | 17,0 | 24,0 | POM schwarz |
| 766.014-8 | 108848 | 8 | G 1/4 | 13,3 | 18,0 | 7,0 | 17,0 | 26,0 | POM schwarz |
| 766.014-10 | 108849 | 10 | G 1/4 | 13,3 | 18,0 | 9,0 | 17,0 | 26,0 | Messing vernickelt schwarz |
| 766.038-8 | 108850 | 8 | G 3/8 | 16,7 | 21,0 | 7,0 | 20,0 | 27,0 | POM schwarz |
| 766.038-10 | 108851 | 10 | G 3/8 | 16,7 | 21,0 | 9,0 | 20,0 | 28,0 | Messing vernickelt schwarz |